



May 2011

Fostering curiosity and creativity through a variety of hands-on learning experiences and interactive exhibits.

To Our Amazing Volunteers - We wouldn't be here without YOU!

The past year has been a phenomenal experience for the Lander Children's Museum. We have had some amazing exhibits pass through our doors that have opened minds and provided incredible learning opportunities for the children and adults who visit the museum! And, let's not forget the in-house exhibits created by local talent, fabulous programs, and great family events!

None of this would be possible without the effort, time, and energy of the numerous volunteers who have made the Museum what it is today.

As the Director, and first (and for a long time, the only) paid staff, I cannot thank our volunteers enough for their enthusiasm and commitment! I am so proud of our accomplishments and grateful for their dedication and service in our community. The Board of Trustees (also volunteers) and I salute each person who gave us a helping hand!

With gratitude,

Jennifer O'Connor,
Museum Director

P. S. When it's all said and done, volunteers contribute about 1,000 hours per year to the success of the Lander Children's Museum. Wow!

LCM VOLUNTEERS

Gena Robinson	Drew Nelson
Tamara Anderson	Morgan Nelson
YT Sempert	Wayne Robertson
Amy Russian	Margy Irvine
Janet, Dave, Lottie & Hannah Smithson	Don Reynolds
	Don Strube
Brogan Johnston	Matt Herr
Emilee Robins	Dane Herr
Morgan Robins	LCM Board of Trustees:
Emma Wilkinson	RaJean Strube Fossen, Chair
Pathfinder HS Community Experience Class	Kate Strike, Vice-chair
Darla Newell	Dr. Jackie Nelson, Secretary
Kieran Buchanan	Jill Robertson, Treasurer
Renaë Ragsdale	Buck Tilton
Melissa Bautz	Bruce Gallinger
Livia Jones	Sarah Sweeney
Mackenzie Hitschew	And finally,
Skyy Ironeyes	All of the others who didn't
The Estep Family	sign in on the volunteer log.
Evan Fossen	Thank you!

Would you like to get involved? From helping with exhibits and events to fundraising and marketing, volunteer opportunities abound at the LCM! Please contact Jennifer O'Connor at 332-1341, we'd love your help!

*The Lander Children's Museum is a 501 (c) 3 non-profit.
Donations are welcome and may be tax deductible.*

See Page 3 for our Upcoming Events and Summer Programs!

Wyoming Community Foundation Awards \$5,000 Grant

The Flying V Donor Advised fund held by the Wyoming Community Foundation recently awarded the Lander Children's Museum a \$5,000 grant to support general operations and staff salaries.

The WYCF is a non-governmental, publicly supported foundation, governed by a self-perpetuating board of citizens, making grants from individual funds contributed or bequeathed by individuals, families, corporations, nonprofit organizations and other sources. Since its inception in 1989, the WYCF has made \$23 million in grants to Wyoming nonprofits.

We would like to thank both the Wyoming Community Foundation and the Flying V Donor Advised Fund for their continued support our museum and our community!

Association of Children's Museums scholarship awarded to Museum Director

The Association of Children's Museums has awarded a full scholarship to LCM Director, Jennifer O'Connor, to attend InterActivity 2011: Innovation is Child's Play in Houston, TX this month. Funded through Jack Rouse Associates, five scholarships to attend the conference were awarded to small museums with operating budgets under \$500,000.

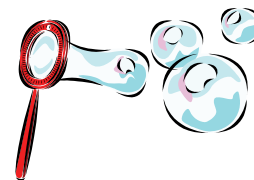
In addition, a grant from the Wyoming Workforce Development Training fund will cover travel expenses associated with this fabulous professional development opportunity. For more information on this training fund, please visit: <https://wyomingworkforce.org>.

Kitchen Science...

There's something magical about a bubble. It's just a little puff of air trapped in a thin film of soap and water, but its precise spherical shape and beautiful swirling colors make it a true wonder of science. A bubble's life expectancy is usually measured in seconds unless you know how to make a SUPER BUBBLE!

Materials

- 1 cup of distilled water (240 mL)
- 2 tablespoons of Dawn® dish soap (30 mL) - regular Dawn, not ultra-concentrated , works best!
- 1 tablespoon of glycerin (15 mL)
- Small bubble wand or pipette



A bubble, like a balloon, is a very thin skin surrounding a volume of air. The rubber skin of the balloon is elastic and stretches when inflated. If you let the mouthpiece of the balloon go free, the rubber skin squeezes the air out of the balloon and it deflates as it flies around the room. The same thing happens if you start blowing a bubble and then stop. The liquid skin of the bubble is stretchy, somewhat like a piece of thin rubber, and like a balloon it pushes the air out of the bubble, leaving a flat circle of soap in the bubble wand. Unlike a sheet of rubber that when unstretched loses all tension, a bubble always has its "stretch" no matter how small the surface becomes. If you blow a bubble and close the opening by flipping the wand over, the tension in the bubble skin tries to shrink the bubble into a shape with the smallest possible surface area for the volume of air it contains. That shape happens to be a sphere. Check out www.exploratorium.edu/ronh/bubbles/bubbles.html for more cool info on bubbles!

Programs and Events

Summer Programs and Events Calendar

Discovery Clubs

Hands-on themed activities.
\$10 per session includes free admission.

Funding for these programs in large part by the LEGO Childrens Fund



Tiny Tots: (preschool age with caregiver)

Time: 10:00-10:45 am

Session I:

June 7th and June 21st

Session II:

July 5th and July 19th

Summer Fun Club:

(entering First Grade age)

Time: 12:30-2:00 pm

Session I:

June 9th and June 23rd

Session II:

July 7th and July 21st

HELP WANTED:

We are hiring part-time staff. Please visit our website for more information or email us at:
landerchildrensmuseum@gmail.com



Follow us on Facebook and keep up-to-date on Museum happenings!

SUMMER SERIES

Join us for our ever-popular, totally hands-on, and always fun summer programs!

Mad Scientists: (ages 5-7)

Enjoy the world of science by wondering, experimenting and observing!

Time: 10:00-11:30 am

Session Dates:

1. June 14-17
2. June 28-July 1
3. July 12-15
4. July 26-29

Maximum class size is 10 students.

Fee: \$30.00/person per session (Members=\$25.00 & may register early!)

Scholarships are available.

Kids Invent!: (ages 8+)

Innovation based learning activities that are creative and educational!

Lander Children's Museum is a licensed site of Kids Invent.

Time: 12:00-2:00 pm

Dates:

1. June 14-17
2. June 28-July 1
3. July 12-15
4. July 26-29

Maximum class size is 10 students.

Fee: \$30.00/person per session (Members=\$25.00 & may register early!)

Scholarships are available.

Funded in part by the Lander District Recreation Board.

Visit us at the Fair!

August 1 - 2

Wow Factor! hands-on, science-related demos and activities with a make it/take it project. Primarily geared toward school age (ages 5 - 10+) children. Children under the age of 7 should be accompanied by an adult/caregiver. Program size is limited to 12 children per session; pre-registration is encouraged, but walk-ins will be welcome if space is available.

Times:

10 - 11am

11am - 12 noon

Lunch break

1 - 2pm

Waterworks!

August 5th and 6th

10 am - 3 pm

SUMMER HOURS

June - August

Tuesday through Friday

10 am - 3 pm

Admission \$3 per person, ages 2 through adult. Members are free

Children under the age of ten must be accompanied by an adult or responsible caregiver.

Be sure to stop in this summer and check out the Color Factory exhibit opening soon!

Lander Half Marathon/5K Challenge for Charities!

We hope you will choose to support the Lander Children's Museum and other worthy non-profits in the Lander Half Marathon/5K Challenge for Charities sponsored by the Lander Community Foundation this July 4th!

By making a donation, you will provide us with the vital resources we need to meet our mission. Some of the benefits include:

1. **Your gift is matched**—we will receive your full donation as well as an additional matching gift . The Lander Community Foundation is targeting a **30 to 50 percent match**. Just think, your \$100 gift could turn into \$150!
2. **We save money**—the Lander Community Foundation handles all event expenses, reducing our fund-raising costs.
3. **Our work is promoted**—the event highlights our work through its marketing materials and increases awareness of Lander-area nonprofits.
4. **You save time and effort**—by writing only one check, you can support any number of the 25 participating nonprofits. The Lander Community Foundation will provide you with one tax receipt.

For more information on this community-wide fundraising event, or to make a donation, please visit www.landercommunityfoundation.org/



465 Lincoln Ave—PO Box 533
Lander, WY 82520

Board of Trustees

RaJean Strube Fossen, Chair
Kate Strike, Vice-Chair
Jackie Nelson, Secretary
Jill Robertson, Treasurer
Bruce Gallinger
Sarah Sweeney
Buck Tilton

Jennifer O'Connor,
Museum Director